

# 冬季12月~2月.45F



<b>Oil Pattern Distance:</b> 45 Feet	<b>Reverse Brush Drop:</b> 45 Feet	<b>Oil Per Board:</b> 50 uL
<b>Forward Oil Total:</b> 15.95 mL	<b>Reverse Oil Total:</b> 7.05 mL	<b>Volume Oil Total:</b> 23 mL
<b>Forward Boards Crossed:</b> 319 Boards	<b>Reverse Boards Crossed:</b> 141 Boards	<b>Total Boards Crossed:</b> 460 Boards

	Start	Stop	Loads	Speed	Crossed	Start	End	Feet	T.Oil
1	5L	5R	2	10	62	0.0	1.4	1.4	3100
2	7L	7R	3	14	81	1.4	7.3	5.9	4050
3	8L	8R	2	14	50	7.3	11.2	3.9	2500
4	9L	9R	2	14	46	11.2	15.1	3.9	2300
5	10L	10R	2	18	42	15.1	20.2	5.1	2100
6	11L	11R	2	18	38	20.2	25.3	5.1	1900
7	2L	2R	0	22	0	25.3	36.0	10.7	0
8	2L	2R	0	26	0	36.0	45.0	9.0	0

Navigation: Forward Reverse More

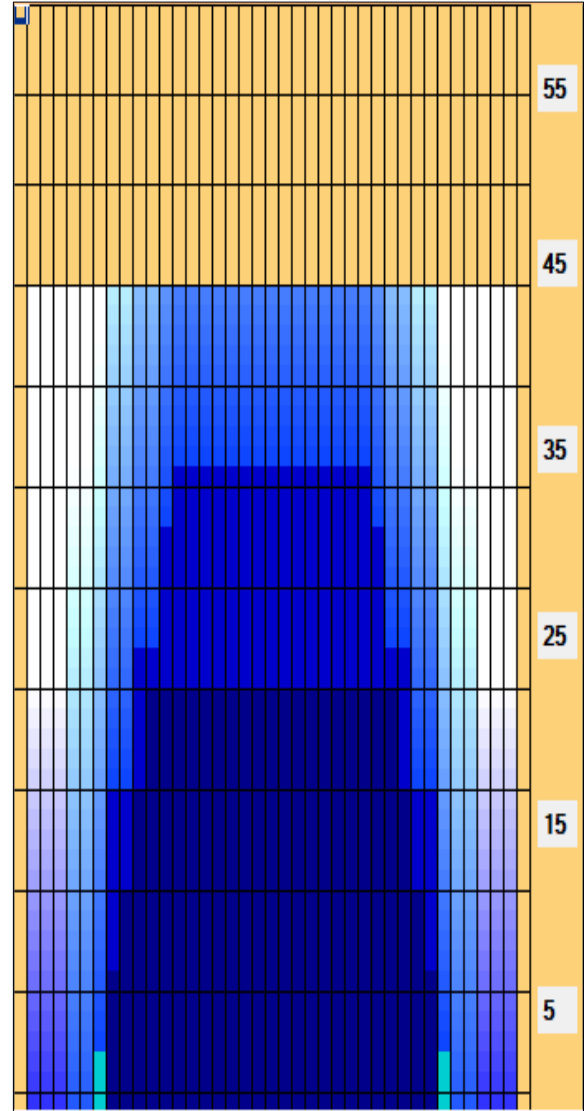
	Start	Stop	Loads	Speed	Crossed	Start	End	Feet	T.Oil
1	2L	2R	0	30	0	45.0	36.0	-9.0	0
2	13L	13R	1	22	15	36.0	32.9	-3.1	750
3	12L	12R	2	22	34	32.9	26.7	-6.2	1700
4	10L	10R	2	22	42	26.7	20.5	-6.2	2100
5	8L	8R	2	22	50	20.5	14.3	-6.2	2500
6	2L	2R	0	10	0	14.3	0.0	-14.3	0

Navigation: Forward Reverse More

Conditioner:  
Type In or Select One

TransferType:  
Type In or Select One

- Forward
- Reverse
- Combined
- Buff



Item Description	3L-7L:18L-18R Outside Track:Middle	8L-12L:18L-18R Middle Track:Middle	13L-17L:18L-18R Inside Track:Middle	18L-18R:17R-13R Middle: Inside Track	18L-18R:12R-8R Middle:Middle Track	18L-18R:7R-3R Middle:Outside Track
Track Zone Ratio	11.11	1.41	1	1	1.41	11.11

