

秋季9月 ~ 11月.40F



Oil Pattern Distance: 40 Feet	Reverse Brush Drop: 40 Feet	Oil Per Board: 50 uL
Forward Oil Total: 14.5 mL	Reverse Oil Total: 8.8 mL	Volume Oil Total: 23.3 mL
Forward Boards Crossed: 290 Boards	Reverse Boards Crossed: 176 Boards	Total Boards Crossed: 466 Boards

	Start	Stop	Loads	Speed	Crossed	Start	End	Feet	T.Oil
1	4L	4R	1	10	33	0.0	0.0	0.0	1650
2	5L	5R	1	18	31	0.0	2.5	2.5	1550
3	7L	7R	2	18	54	2.5	7.6	5.1	2700
4	8L	8R	2	18	50	7.6	12.7	5.1	2500
5	9L	9R	2	18	46	12.7	17.8	5.1	2300
6	10L	10R	2	18	42	17.8	22.9	5.1	2100
7	12L	12R	2	18	34	22.9	28.0	5.1	1700
8	2L	2R	0	22	0	28.0	40.0	12.0	0

Navigation: Forward Reverse More

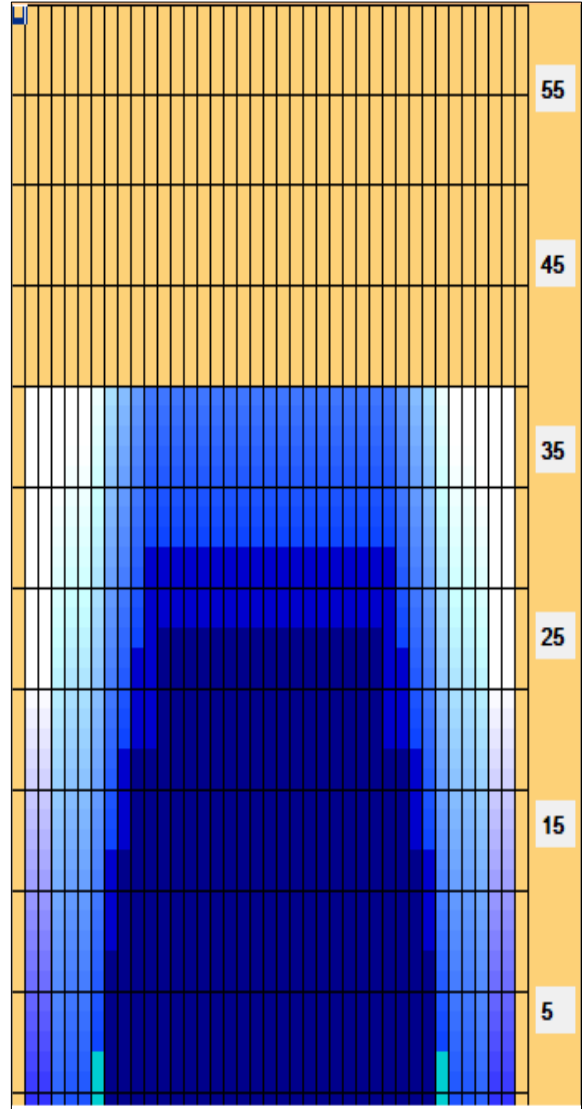
	Start	Stop	Loads	Speed	Crossed	Start	End	Feet	T.Oil
1	2L	2R	0	30	0	40.0	32.0	-8.0	0
2	11L	11R	2	18	38	32.0	26.9	-5.1	1900
3	10L	10R	2	18	42	26.9	21.8	-5.1	2100
4	9L	9R	2	18	46	21.8	16.7	-5.1	2300
5	8L	8R	2	18	50	16.7	11.6	-5.1	2500
6	2L	2R	0	14	0	11.6	0.0	-11.6	0

Navigation: Forward Reverse More

Conditioner:
Type In or Select One

TransferType:
Type In or Select One

- Forward
- Reverse
- Combined
- Buff



Item	3L-7L:18L-18R	8L-12L:18L-18R	13L-17L:18L-18R	18L-18R:17R-13R	18L-18R:12R-8R	18L-18R:7R-3R
Description	Outside Track:Middle	Middle Track:Middle	Inside Track:Middle	Middle: Inside Track	Middle:Middle Track	Middle:Outside Track
Track Zone Ratio	11.11	1.35	1	1	1.35	11.11

