

center2016.6~42F



Oil Per Board: **45 mL** Oil Pattern Distance: **42 Feet** Volume Oil Total: **28.125 mL** Total Boards Crossed: **625 Boards**
 Forward Oil Total: **18.765 mL** Reverse Oil Total: **9.36 mL**
 Forward Boards Crossed: **417 Boards** Reverse Boards Crossed: **208 Boards**

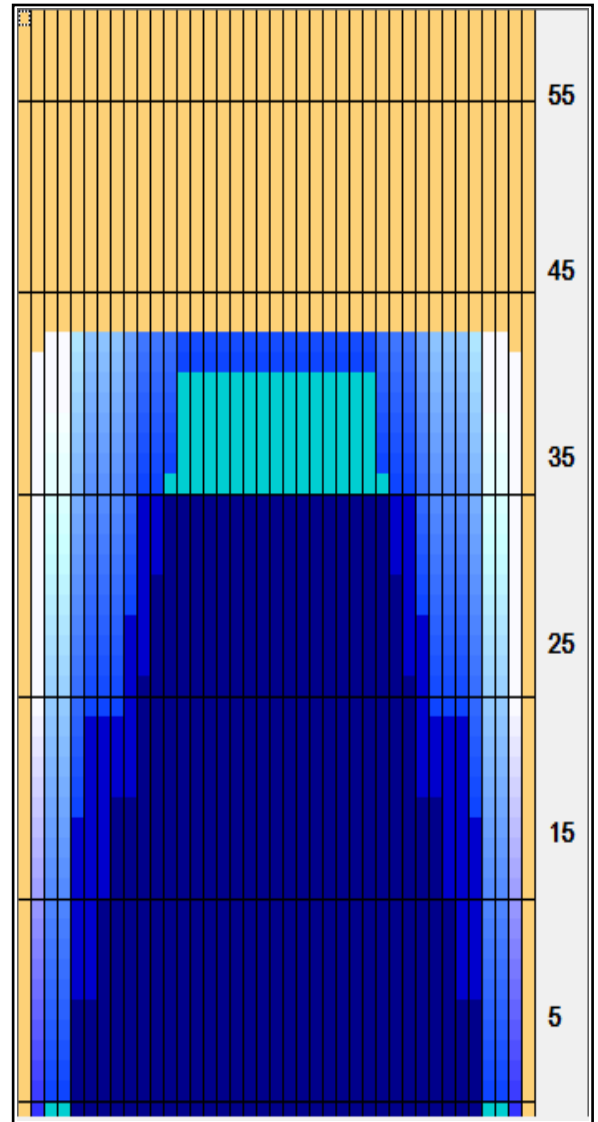
	Start	Stop	Loads	Speed	Crossed	Start	End	Feet	T.Oil
1	2L	2R	1	18	37	0.0	0.0	0.0	1,665
2	3L	3R	2	18	70	0.0	5.1	5.1	3150
3	5L	5R	2	18	62	5.1	10.2	5.1	2790
4	7L	7R	2	18	54	10.2	15.3	5.1	2430
5	8L	8R	2	18	50	15.3	20.4	5.1	2250
6	10L	10R	2	18	42	20.4	25.5	5.1	1890
7	11L	11R	2	18	38	25.5	30.6	5.1	1710
8	12L	12R	2	18	34	30.6	35.7	5.1	1530
9	13L	13R	2	18	30	35.7	40.8	5.1	1350
10	2L	2R	0	22	0	40.8	42.0	1.2	0

Navigation: Forward / Reverse / More Info

	Start	Stop	Loads	Speed	Crossed	Start	End	Feet	T.Oil
1	2L	2R	0	30	0	42.0	34.0	-8.0	0
2	10L	10R	2	22	42	34.0	27.8	-6.2	1890
3	9L	9R	2	18	46	27.8	22.7	-5.1	2070
4	6L	6R	2	18	58	22.7	17.6	-5.1	2610
5	5L	5R	2	18	62	17.6	12.5	-5.1	2790
6	2L	2R	0	14	0	12.5	0.0	-12.5	0

Navigation: Forward / Reverse / More Info

Forward Oil
 Reverse Oil
 Combined Oil
 Buff Area



Arrow Zone Ratios

Item	2-5L:16L-20	6-10L:16:-20	11-15L:16L-20	16L-20:20-16R	16L-20:20-16R	20-16R:15-11R	20-16R:10-6R	20-16R:5-2R
ml Arrow	157.5	603	1071	1125	1125	1071	603	157.5
Zone Ratio	7.14	1.87	1.05	1	1	1.05	1.87	7.14

Track Zone Ratios

Item	3L-7L:18L-18R	8L-12L:18L-18R	13L-17L:18L-18R	18L-18R:17R-13R	18L-18R:12R-8R	18L-18R:7R-3R
Description	Outside Track:Middle	Middle Track:Middle	Inside Track:Middle	Middle: Inside Track	Middle:Middle Track	Middle:Outside Track
Track Zone Ratio	3.79	1.37	1	1	1.37	3.79

